



WHEAT SEED

# WB9479

WB9479 is a Hard Red Spring Wheat variety with excellent yield and protein potential for the Northern Region. This medium-short-height variety has very good test weight, excellent standability, and a good disease tolerance package.

Maturity	<b>Medium</b>
Region	<b>Northern Region</b>
Class Name	<b>Hard Red Spring</b>



## Strengths

- Excellent Yield Potential
- Excellent Protein Content
- Excellent Standability
- Good Disease Tolerance Package
- Single-Use License Variety

## Product Details

### Key Characteristics (Protein Content + 3 More)

1

Protein Content  
Excellent

6

Fusarium Head  
Blight (Scab)  
Good

1

Standability  
Excellent

2

Yellow (Stripe) Rust  
Excellent

### Management (Herbicide Tolerance + 9 More)

HERBICIDE TOLERANCE	-
MATURITY GROUP	Medium
PLANTING RATE	Medium
HEAD TYPE	Awne
YIELD POTENTIAL	2
PLANT VARIETY PROTECTION	Yes
LIMITED USE LICENSE AGREEMENT REQUIRED	Yes
CROP SYSTEM	IR,DR
PATENT PROTECTION	Yes
NEW PRODUCT	No

**Production** (Plant Height + 3 More) ^

**Medium-Short**

Plant Height



Standability  
Excellent



Tillering Potential  
Excellent



Test Weight  
Very Good

**Quality** (Protein Content + 1 More) ^

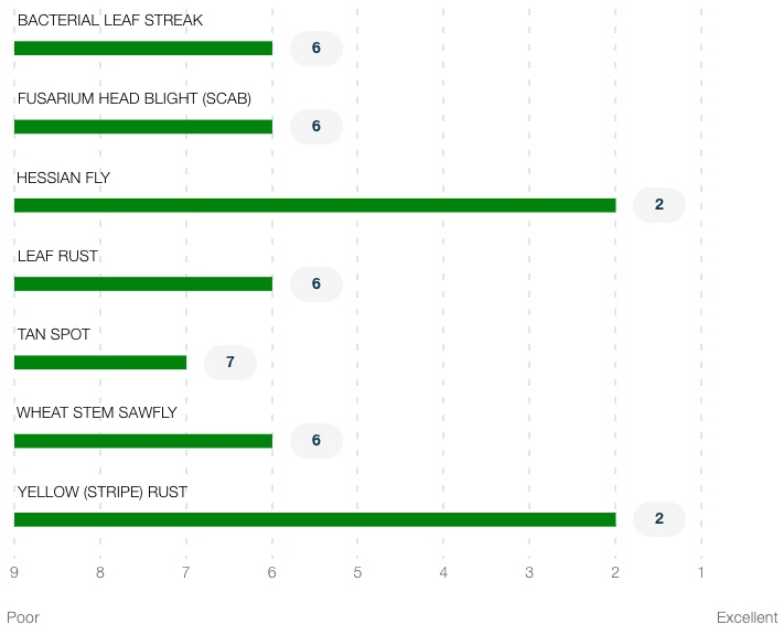


Protein Content  
Excellent



Milling/baking  
Quality  
Excellent

**Pest And Disease Resistance** (Bacterial Leaf Streak + 6 More) ^



**Product Details Key:** ^

**National Rating Scale**

Excellent (1-2); Very Good (3-4); Good (5-6); Fair (7-8); and Poor (9)