

WHEAT SEED

WB9719

WB9719 is a Hard Red Spring Wheat variety with excellent yield potential plus broad adaptability. Suitable for all environments from irrigated to dryland, this medium-height variety has excellent standability and test weight with a very good disease tolerance package.

Maturity	Medium-Late
Region	Northern Region, Montana Region
Class Name	Hard Red Spring



Strengths

- Excellent Yield Potential
- Broadly Adaptable
- Excellent Standability
- Very Good Protein Content
- Single-Use License Variety

Product Details

Key Characteristics (Protein Content + 3 More)

3 Protein Content Very Good	6 Fusarium Head Blight (Scab) Good	2 Standability Excellent
2 Yellow (Stripe) Rust Excellent		

Management (Herbicide Tolerance + 9 More)

HERBICIDE TOLERANCE	-
MATURITY GROUP	Medium-Late
PLANTING RATE	Medium
HEAD TYPE	Awned
YIELD POTENTIAL	1
PLANT VARIETY PROTECTION	Yes
LIMITED USE LICENSE AGREEMENT REQUIRED	Yes
CROP SYSTEM	DR
PATENT PROTECTION	Yes
NEW PRODUCT	No

Production (Plant Height + 3 More) ^

Medium

Plant Height

2
Tillering Potential
Excellent

2
Test Weight
Excellent

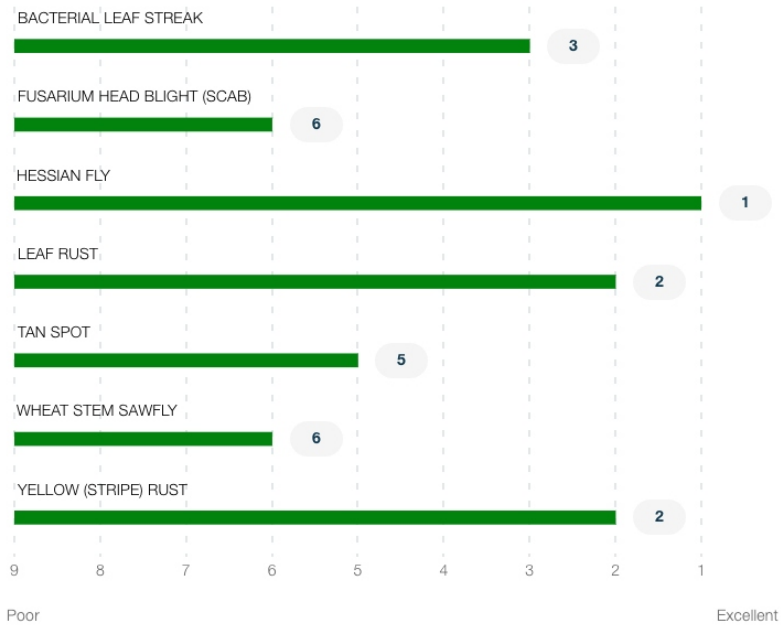
2
Standability
Excellent

Quality (Protein Content + 1 More) ^

3
Protein Content
Very Good

2
Milling/baking
Quality
Excellent

Pest And Disease Resistance (Bacterial Leaf Streak + 6 More) ^



Product Details Key: ^

National Rating Scale

Excellent (1-2); Very Good (3-4); Good (5-6); Fair (7-8); and Poor (9)